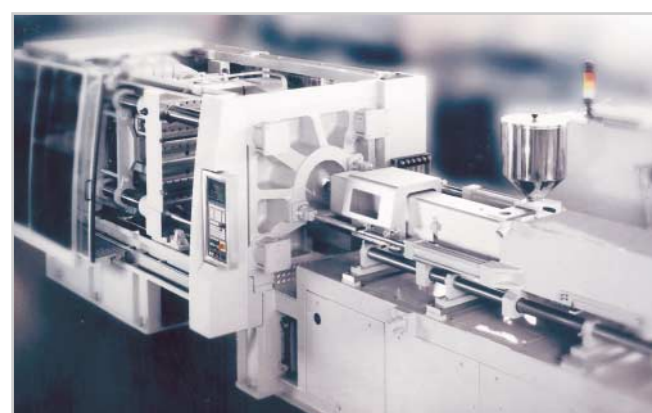
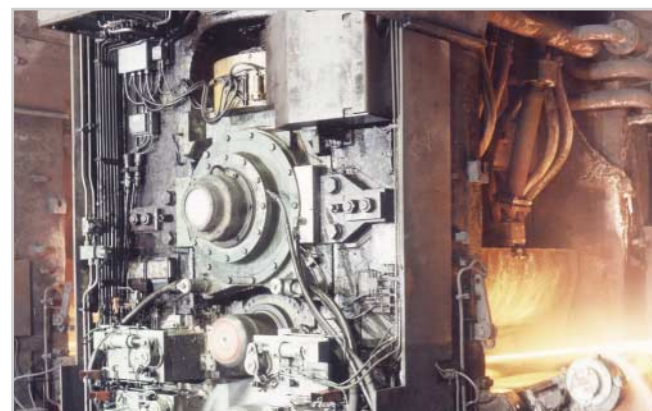


Temposonics®

Magnetostrictive Position Sensors

- Contactless
- Absolute
- High-Precision



THE APPLICATIONS

Magnetostriction: The best choice for your application

You are under constant pressure to improve your products, reduce your costs and maintain a competitive edge. The choice you make must provide accuracy and repeatability. You need modular solutions that can adapt to your specific application and you need a price/performance ratio that delivers value.

By choosing MTS Temposonics sensors, you're choosing the leader in magnetostrictive sensors.

And that means you have a huge competitive advantage.

Increased productivity through innovation

MTS sensors do more than just measure position. Intelligent electronics move some control functions to the sensor, dramatically increasing productivity. When needed, MTS can tailor application-specific software to meet your needs.

www.mtssensor.de
www.temposonics-shop.de
 Service Hotline: 01805 - mtssensor



© MTS Temposonics® Product Overview 102005e - alterations reserved

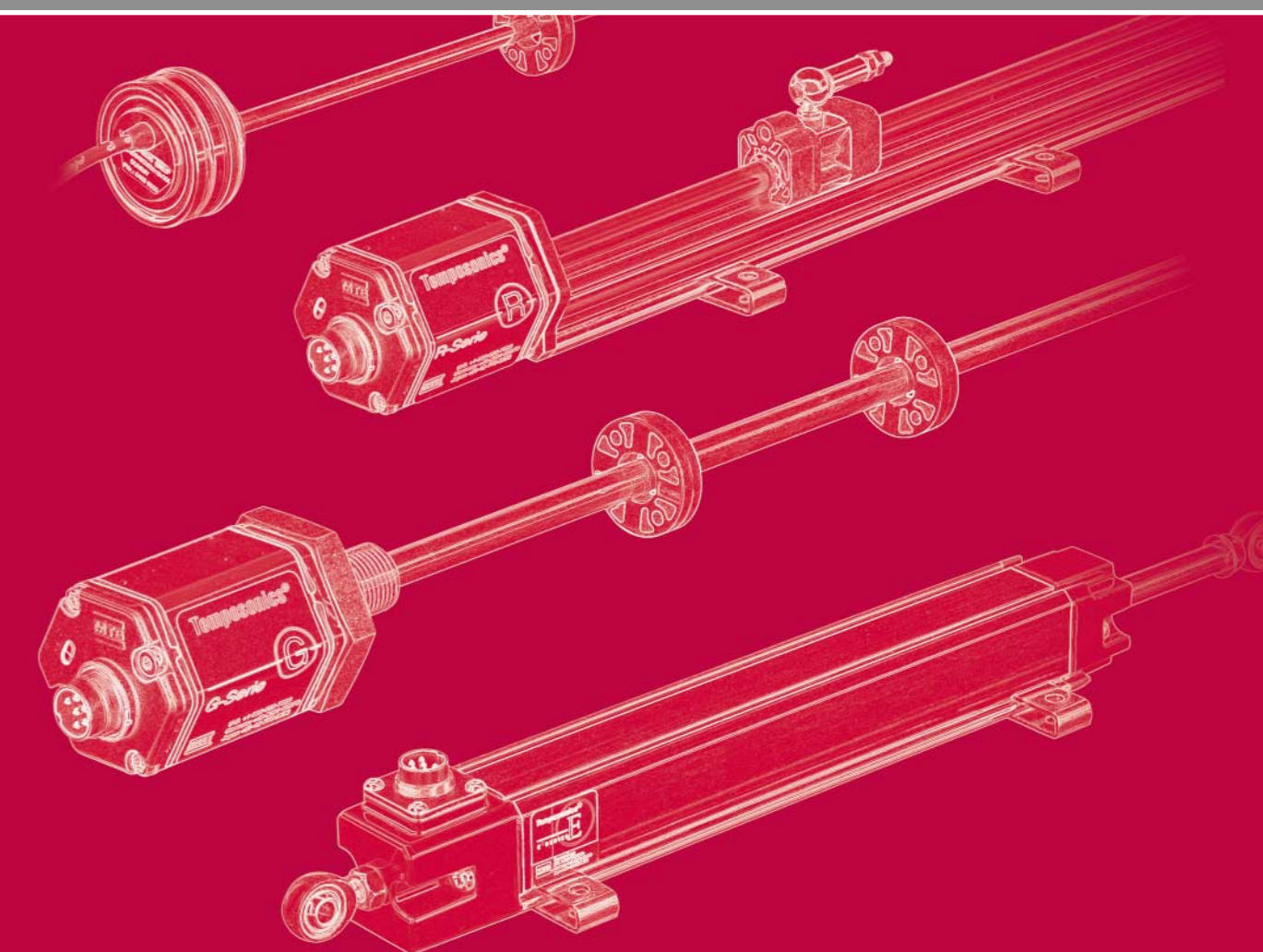


MTS Sensor Technologie GmbH & Co. KG
 Auf dem Schüffel 9
 D-58513 Lüdenscheid
 Tel.: +49-2351-9587-0
 Fax: +49-2351-56491
 info@mtssensor.de
 www.mtssensor.de

MTS Systems Corporation Sensors Division
 3001 Sheldon Drive
 Cary, NC 27513, USA
 Tel.: +1-919-677-0100
 Fax: +1-919-677-0200
 info@mtssensors.com
 www.mtssensors.com

MTS Sensors Technology Corp.
 Ushikubo Bldg.
 737 Aihara-cho, Machida-shi
 Tokyo 194-0211, Japan
 Tel.: +81-42-775-3838
 Fax: +81-42-775-5516
 info@mtssensor.co.jp
 www.mtssensor.co.jp

Product Overview



The Measurable Difference

THE COMPANY



Headquarters
MTS Systems Corporation, Minneapolis, USA



MTS Sensor Technologie
Lüdenscheid, Deutschland



MTS Sensors Division
Cary (North Carolina), USA



MTS Sensors Technology Corp.
Tokyo, Japan

The World of MTS - Precision and Reliability

Following the founding of **MTS Systems Corporation** in 1951, the company rapidly developed into a leading supplier of intelligent hardware and software products in the fields of test and simulation systems and in measuring and automation technology. Today MTS Systems Corporation has over **1.600 employees** worldwide – **250** of whom are employed by **MTS Sensors** at three sites in the **USA (Cary, N.C.)**, **Germany (Lüdenscheid)** and **Japan (Tokyo)**. At MTS, intensive basic research is efficiently merged with a consistent focus on practical requirements. The results are innovative solutions for a wide range of potential industrial and non-industrial applications.

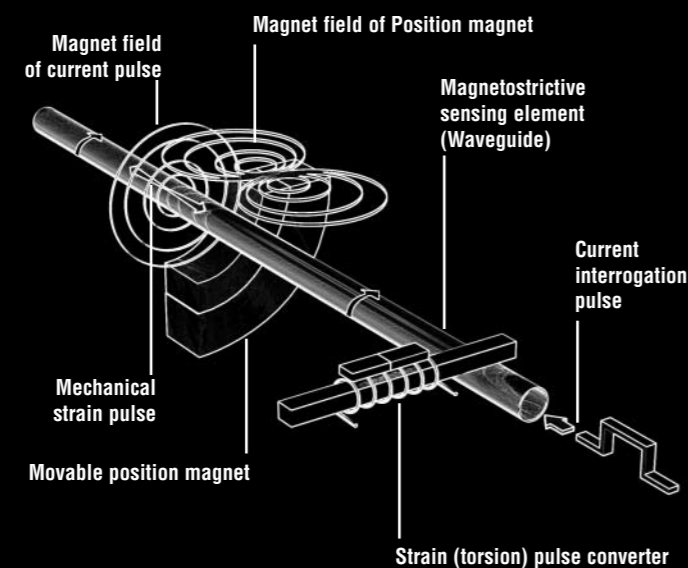
THE PRINCIPLE

Magnetostriction - A Milestone in Measurement Technology

The heart of MTS sensors is the ferromagnetic measuring element, also known as the waveguide, and a movable position magnet that generates a direct-axis magnetic field in the waveguide.

When a current or interrogation pulse passes through the waveguide, a second magnetic field is created radially around the waveguide. The interaction between the magnetic field in the waveguide and the magnetic field produced by the position magnet generates a strain pulse which travels at a constant ultrasonic speed from its point of generation, the measurement point, to the end of the waveguide where it is transformed into an electric pulse in the sensor element. The resulting signal is processed by the specialized electronics of the Temposonics sensor.

With our extensive know-how of ferromagnetic materials, magnetic effects and ultrasonic processes, MTS remains unrivalled in performance standards for non-contacting position measurement of the highest precision.



COMPLETE DESIGN FLEXIBILITY WITH MAXIMUM PERFORMANCE

Whether your application is industrial or medical, harsh environment or commercial, extra-long or ultra-space sensitive, standard or custom, MTS Sensors have the features, options and flexibility to work in your design.

NEW!!!
Diagnostics LEDs

	R-SERIES A smart sensor for fast, precise, and synchronized position control application.			G-SERIES Programmable sensors with built in diagnostics.			E-SERIES Sensors designed for applications requiring simple and economical position feedback.			
Sensor Model	RH Pressure-resistant stainless steel rod sensor for fluid technology	RP Robust aluminum profile for industrial manufacturing	RF Multifunctional industrial sensor with flexible measuring rod	GH Pressure-resistant stainless steel rod sensor for automation	GP Aluminum profile, perfect Sensor for mechanical engineering	GB Pressure-resistant rod version for hydraulic cylinders	EP Aluminum profile for industrial automation technology	ER Profile sensors with "Rod & Cylinder" actuation and integral electronics	EP2 contactless linear position sensor to substitute linear potentiometers	EH Compact rod version designed for installation into hydraulic cylinders
Output	Voltage: 0...10 V; 10...0 V; -10...+10 V Additional output ranges available between -10 and +10 V.			Voltage: 0...10 V; 10...0 V; -10...+10 V, +10...-10 V			Voltage: 0...10 V and 10...0V		Voltage: 0...10 V	
	Current: 0/4...20 mA; 20...4/0 mA Additional output ranges available between 0 and 20 mA.			Current: 0/4...20 mA; 20...4/0 mA			Current: 4...20 mA or 20...4 mA		Current: 4...20 mA	
	SSI: Gray- or Binary-Format; Data length selectable; synchronous / asynchronous measurement; optional Parity- and Error Bit.			-			SSI: Gray or Binary; 25 or 24 Bit, synchronous and asynchronous measurement		-	
	Fieldbus: CANbus; CANOpen; Profibus DP-V1; DNet.			-			-		-	
Measuring Range	25-7600 mm	25-5000 mm optional up to 6200 mm	0,25-15 m other length on request	Analog: 50-2500 mm Digital: 50-7600 mm	Analog: 50-2500 mm Digital: 50-5000 mm	Analog: 50-1500 mm Digital: 50-3250 mm	Analog: 50-1500 mm Digital: 50-3250 mm	50-1500 mm	50-1500 mm in fixed length	50...1000 mm
Resolution	Analog: 16 Bit; 0,0015 % (Minimum 10 µm)			Analog: infinite, controller dependent and restricted by output ripple (0,01 %)			Analog: infinite, controller dependent and restricted by output ripple (0,01 %)		Analog: infinite, controller dependent and restricted by output ripple (0,02 %)	
	Digital: 2 µm; 1µm on SSI			Digital: 5 µm dependent on controller		Digital: 10 µm		Digital: 10 µm dependent on controller		-
Features	Velocity Measurement			-			-		-	
	Simultaneous Multi Magnets Measurement: Analog 2 Positions; CAN and Profibus up to 15 Positions; SSI differentiation measurement of 2 positions			Simultaneous Multi Magnets Measurement: 15 Positions on Start / Stop			-		-	
	-			-			-		Parameter upload on Start / Stop	
Diagnostic	Diagnostics LEDs for general information and troubleshooting. Sensor parameters can be diagnosed and changed with programming tool. Programmable sensor parameters.		-	Diagnostics LEDs. Diagnostic data online via programming tool.		-		-		-

CUSTOMIZED PRODUCTS AND ACCESSORIES (Product information see data sheet)

