

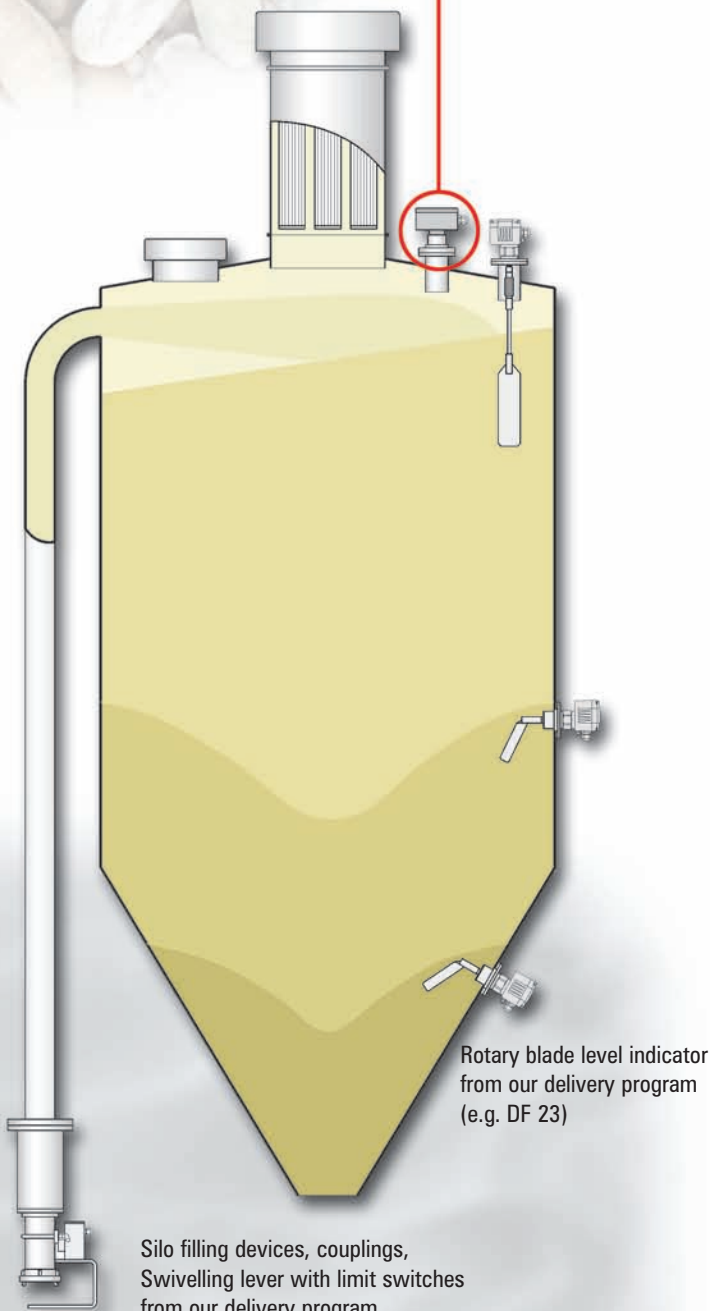
MOLLET
Füllstandtechnik GmbH



Silo **MSD**
pressure detector

The pressure detector is protecting silos and containers from too high pressure during the pneumatic filling process

Pressure detector for mounting at the top of silos and containers

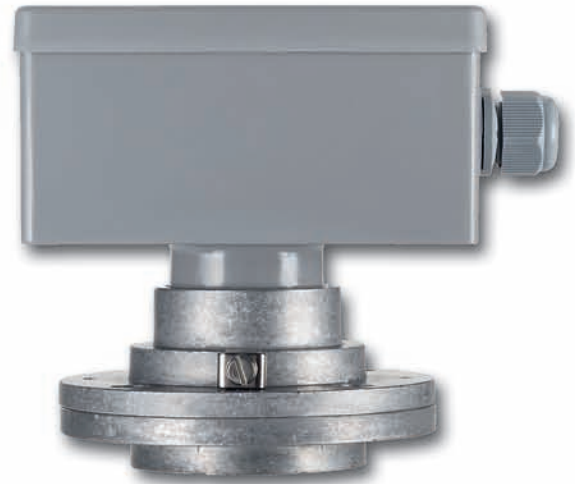


Rotary blade level indicator from our delivery program (e.g. DF 23)

Silo filling devices, couplings, Swivelling lever with limit switches from our delivery program

- Silo overfill monitoring systems
- Hose couplings

MSD



Function

Using the increasing pressure in the silo or container. If the pressure increases to the membrane in stainless steel, the signal switch will register this increase in pressure and will evaluate it.

The sensitivity can be adjusted by a spring

Signal contact	change-over contact, potentialfree
Capacity of the contact	4 A / 250 V AC
Switching point	factory setting at 40 mbar = 0,04 bar or 400 mbar
Type of protection	IP65 (DIN EN 60529)

Suitable for all industrial fields

ATEX - Option

Ex type of protection

⚡ II 1/3D IP65 T 83 °C

MOLLET GmbH

Füllstandtechnik

Industriepark RIO 103 • D-74706 Osterburken
Tel.: (+49) 06291/64400 • Fax: (+49) 06291/9846
E-mail: info@mollet-gmbh.de • www.mollet-gmbh.de