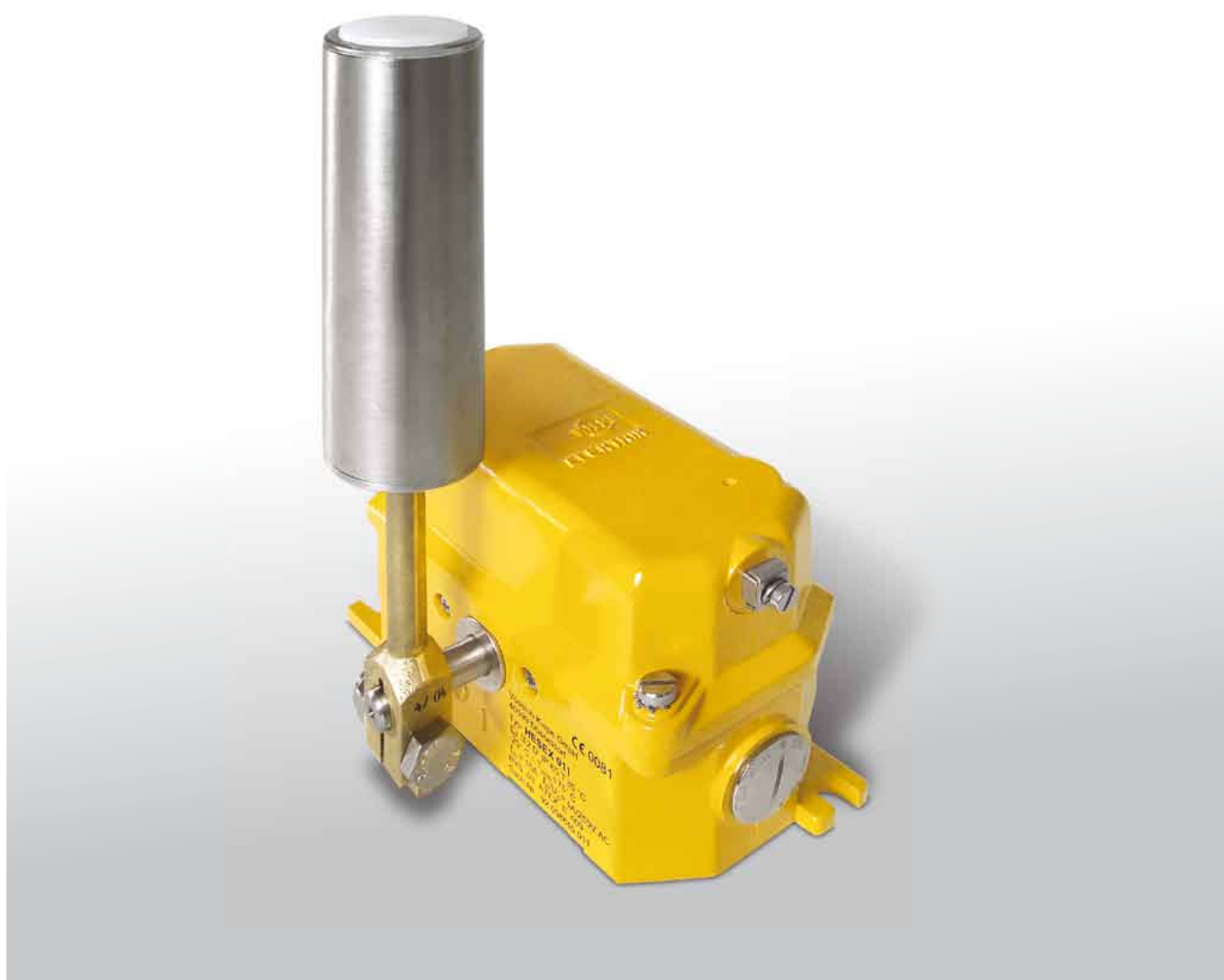


Conveyor Belt Misalignment Switch

HESEX

ATEX  II 2D IP 65 T 85 °C


Leaflet No. **Kiepe 510**



APPLICATION

Kiepe Belt Misalignment Switches are used in conveyor installations for monitoring the true running of conveyor belts. The switches, when mounted at the running edges of a conveyor belt, will be operated if the belt deviates from its designed running line by more than a permissible distance.

The Kiepe Belt Misalignment Switches HESEX are approved for use in areas with combustible dusts acc. to EN 50281-1-1, part 1-1: Electrical apparatus protected by enclosures.

The switches are marked with ATEX  II 2D IP 65 T 85 °C and can be used in zones 21 and 22, equipment group II, categories 2 and 3.

The Belt Misalignment Switch HESEX is used for conveyor installations subjected to especially severe operating conditions. The actuating roller of stainless steel is carried in stainless steel ball bearings for improved handling of lateral forces and jerks.

The large roller diameter of 48 mm permits the use of this device where fast belt speeds prevail. All external parts are either of stainless steel or have been specially plated.

The trip points are to be adjusted within 5 and 15° resp. 15 and 35° by means of movable actuating cams.

The device is intended for use in stationary installations and in vehicles.

TECHNICAL DATA

In compliance with the following Standards and Regulations	EN 50281-1-1, Part 1-1, Ex II 2D EN 60947-5-1, VDE 0110 - Degree of Pollution 2 (interior), 4 (exterior)
Suitable for	Controls and equipment acc. to EN 60204
Enclosure	Aluminium, EN-AC-AISI 12
Finish	2-component DD-tile enamel, yellow RAL 1004
Mounting	2 long holes for screws M8
Permissible Ambient Temperature (VDE 0660)	$-25\text{ °C} \leq T_{\text{amb}} \leq +75\text{ °C}$
Max. Operating Temperature of Enclosure	85 °C
IP Protection Class	IP 65 acc. to EN 60529
Switching System	Snap-acting switch, 2 changeover contacts
Type of operation	Actuating roller, 48 mm diameter, stainless steel
Switching Points	Adjustable within 5° to 15° resp. 15° to 35° Standard setting is $2 \times 10^\circ$
Excursion	max. 75°
Rated Insulation Voltage U_i	380V AC, 250V DC
Conventional Thermal Current I_{th}	6 A
Breaking Capacity AC 15:	$U_e = 240\text{ V AC}$, $I_e = 1,5\text{ A}$ 24 V DC , $T = 2\text{-}3\text{ ms}$, up to 3 A
Contact Service Life	$0,5 \cdot 10^6$ switching cycles
Mechanical Operating Life	$> 10^5$ switching cycles
Cable entry	Tapped hole for 2 x M25 x 1,5
1 x cable gland M25 x 1,5; sealing area $\varnothing 11,5\text{ mm}$ to $\varnothing 15,5\text{ mm}$ 1 x Plug M25 x 1,5	
Connections	max. 1,5 mm ²
Equipotential Bonding Connection	Connectable conductors: 4 mm ² finely-stranded, 6 mm ² monofilar
Earth	Inside the housing M4
Ordering Code	92.058 645.011

ACCESSORIES

Use only cable glands and plugs recommended by the manufacturer and supplied with the switch. These cable glands and plugs are designed acc. to ATEX EU design sample test certification.

The use of other cable glands and plugs may lead to a void device type approval.

Cable gland	113.52.01.20.01
Plug	113.52.87.20.01

DIMENSIONS

