



VeriSens[®] Series 1500-IP 69K / 1800-IP 69K
Powerful vision sensors with IP 69K protection class

For inspection and acquisition of

- Position and orientation
- Part completeness and presence
- Barcode and matrix code
- Numbers and characters

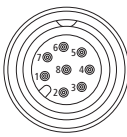
Sensor Solutions


Motion Control

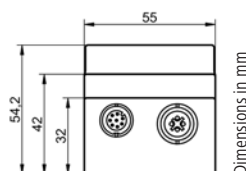
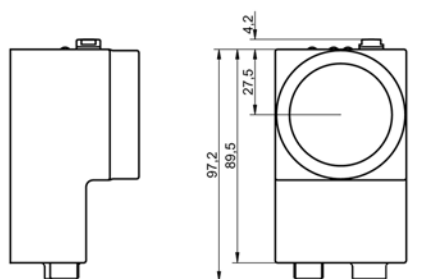
Vision Technologies

Process Instrumentation

Models	VXR 1503M10WE	VXR 1803M10WE	VXR 1503M16WE	VXR 1803M16WE
Image sensor	High Sensitive Progressive Scan CCD			
Number of pixels	656 x 494			
Type	Monochrome			
LED illumination	White			
Speed	High Resolution Mode: max. 30 inspections per second High Speed Mode: max. 50 inspections per second			
Lens	f = 10 mm		f = 16 mm	
Min. object distance	50 mm		60 mm	
Object distance	Maximum field of view			
60 mm	30 mm x 23 mm		13 mm x 10 mm	
100 mm	51 mm x 38 mm		26 mm x 20 mm	
200 mm	101 mm x 76 mm		57 mm x 43 mm	
300 mm	152 mm x 114 mm		89 mm x 67 mm	
Signal processing	Baumer FEX® 3.0			
Processor	Baumer FEX® 3.0			
Memory	192 MBytes RAM, 32 MBytes Flash			
Code types/OCR (Series 1800)	Baumer FEX® 3.0			
Barcode	2/5 Industrial, 2/5 Interleaved, Codabar, Code 39, Code 93, Code 128, PharmaCode EAN 13, EAN 8, UPC-A, UPC-E: Base code + variants Add-On 2, Add-On 5 RSS: Limited, Expanded, Expanded Stacked RSS-14: Base code + variants Truncated, Stacked, Stacked Omnidir			
Matrix code	Data Matrix (ECC 200), QR, PDF417			
Font	any font style, Industrial and Dot Matrix lettering			
Inputs / Outputs	Inputs: 8 ... 30 VDC / Outputs: PNP 100 mA			
Digital input	Trigger, Job selection, external Teach-in			
Digital output	Ready, Pass / Fail, Flash sync / Alarm			
Communication	Ethernet (10 Base-T / 100 Base-TX)			
Setup	Ethernet (10 Base-T / 100 Base-TX)			
Process interface	TCP/IP			
Electrical data	TCP/IP			
Power supply	8 ... 30 VDC			
Power consumption	typical 6 Watts			
Housing	TCP/IP			
Material	Stainless steel 1.4404			
Material cover glass	Laminated safety glass Sipler VSG			
Weight	700 g			
Operating conditions	TCP/IP			
Operating temperature	5 °C ... 50 °C			
Humidity	0 % ... 90 % (non-condensing)			
Protection class	IP 69K			

PLC interface	Type M12 / 8-pin
1: IN1 (Trigger)	
2: Power (8 ... 30 VDC)	
3: OUT1 (Ready)	
4: OUT2 (Pass / Fail)	
5: OUT3 (Alarm / Flash)	
6: IN2 (Job / Teach-in)	
7: Ground	
8: IN3 (Job / Teach-in)	

Ethernet interface	Type M12 / 4-pin
1: TD+	
2: RD+	
3: TD-	
4: RD-	



Series 1500-IP 69K

Series 1800-IP 69K

Your benefits

- Easy to use Ethernet interface for parameterization and online process data transmission
- User-friendly visualization of live images via standard web browser
- Direct use and easy cleaning due to optimal housing design with protection class IP 69K
- Reliable operation even under varying lighting conditions due to contour-based image processor
- Rapid commissioning is supported by intuitive user interface
- Capable of storing and switching between up to 255 jobs
- Compact
- Reliable
- Powerful
- User-friendly



Baumer

Baumer International

Baumer Group · International Sales
P.O. Box · Hummelstrasse 17 · CH-8501 Frauenfeld
Phone +41 (0)52 728 1122 · Fax +41 (0)52 728 1144
sales@baumer.com · www.baumer.com

Find your local partner
www.baumer.com/worldwide